



**Vel Tech**  
Rangarajan Dr. Sagunthala  
R&D Institute of Science and Technology  
(Deemed to be University Estd. u/s 3 of UGC Act, 1956)



## Office of Quality Assurance

### Student Satisfaction Survey (SSS)

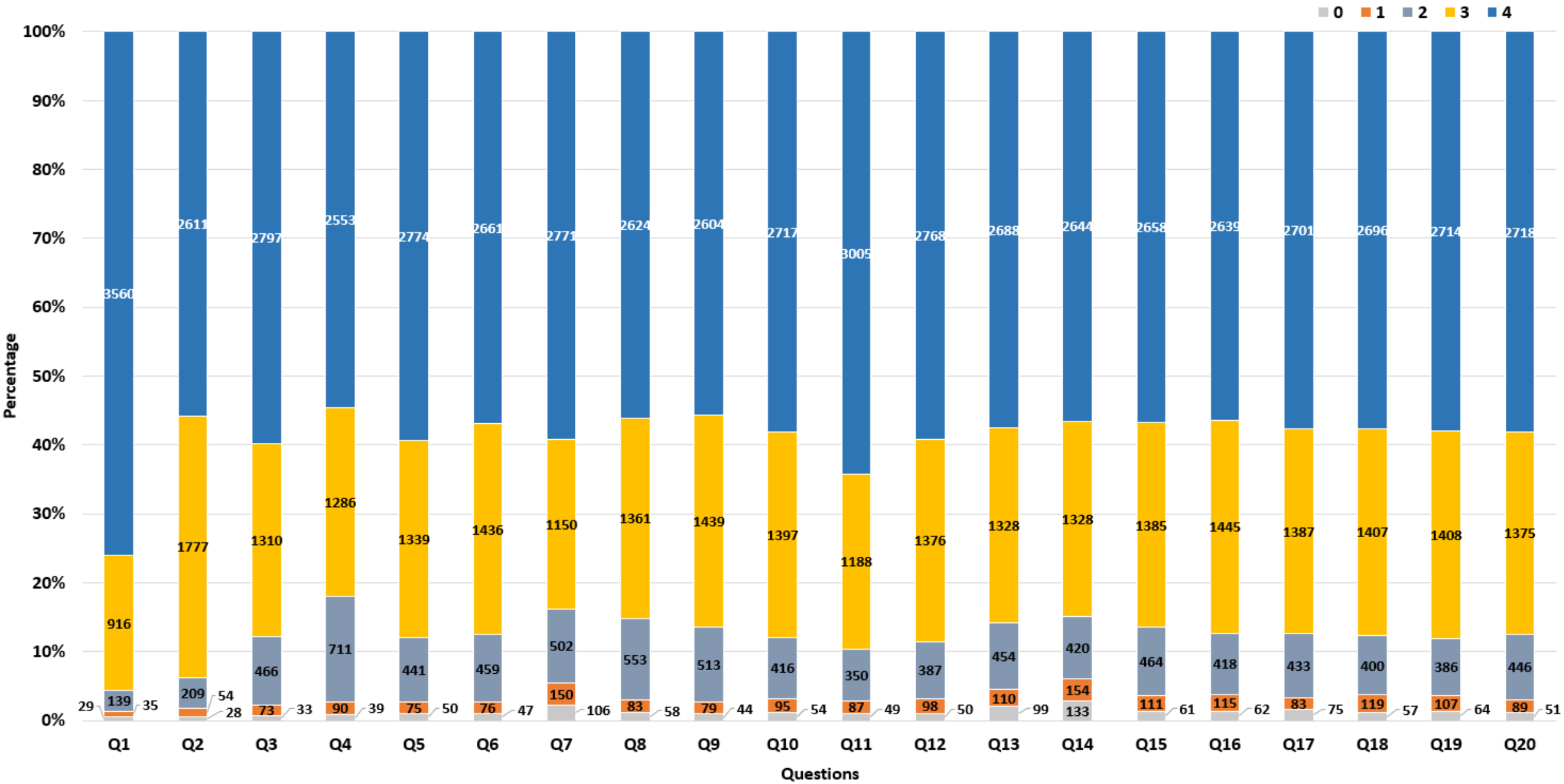
#### on Teaching – Learning and Evaluation

#### Student Response - Analysis for AY 2024-25

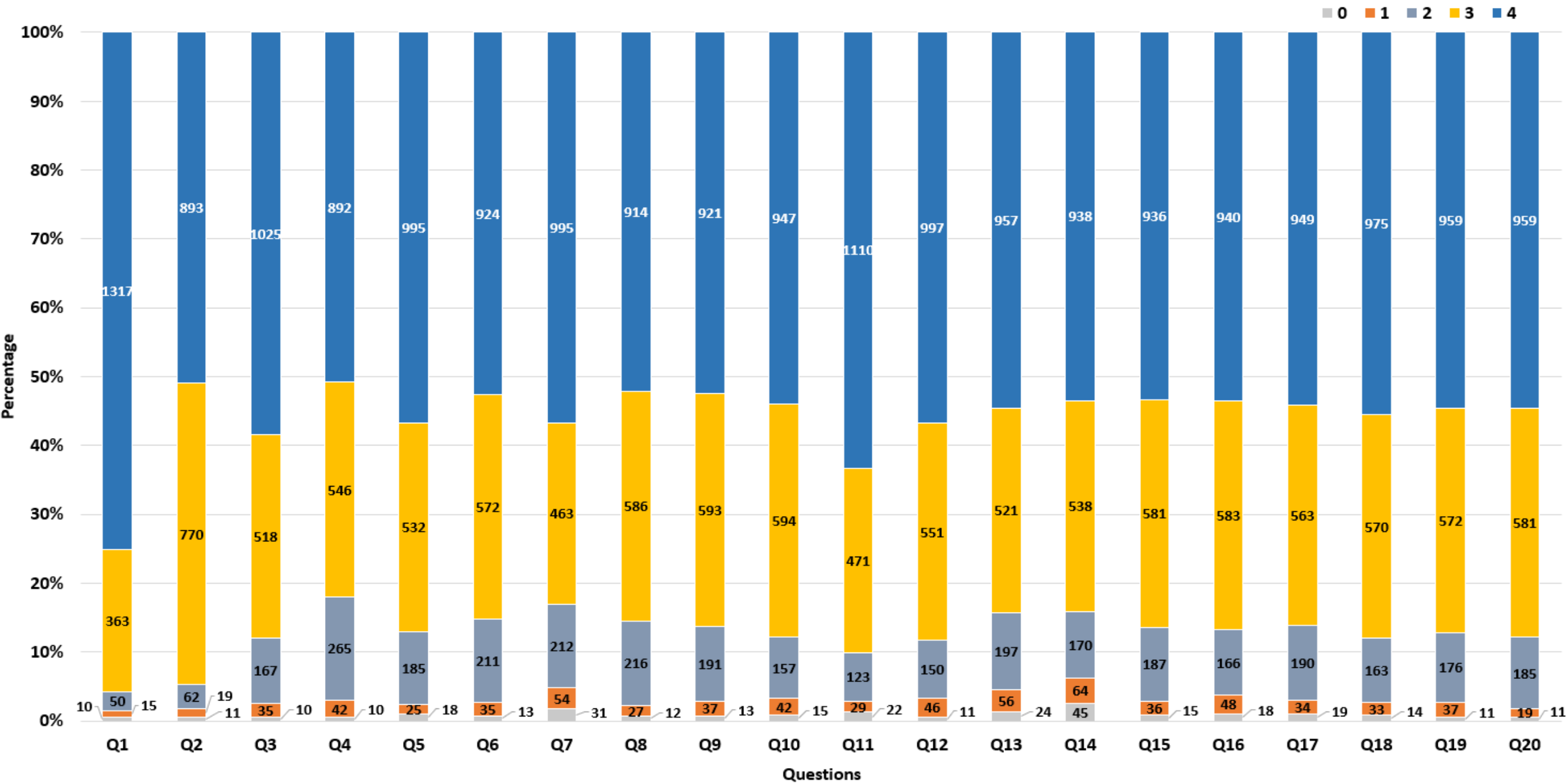
**Total Responded Count - 8412**

School	Department	Count
School of Computing	Artificial Intelligence and Machine Learning	208
	Artificial Intelligence (AI) and Data Science	239
	Computer Science and Design	211
	Computer Science and Engineering (Artificial Intelligence and Machine Learning)	160
	Computer Science and Engineering (Cyber Security)	166
	Computer Science and Engineering (Data Science)	149
	Computer Science Engineering	3285
	Information Technology	261
School of Electrical and Communication	Biomedical Engineering	162
	Biotechnology	186
	Electronics and Communication Engineering	1366
	Electrical and Electronics Engineering	41
School of Mechanical and Construction	Aeronautical Engineering	143
	Civil Engineering	30
	Mechanical Engineering	105
School of Management	B.B.A.	140
	M.B.A.	237
School of Commerce	B.Com.	460
School of Law	B.A LL.B. (Hons.)	390
	B.Com LL.B. (Hons.)	382
School of Multimedia Technology and Communication	Multimedia	34
	Visual Communication	57
<b>Grand Total</b>		<b>8412</b>

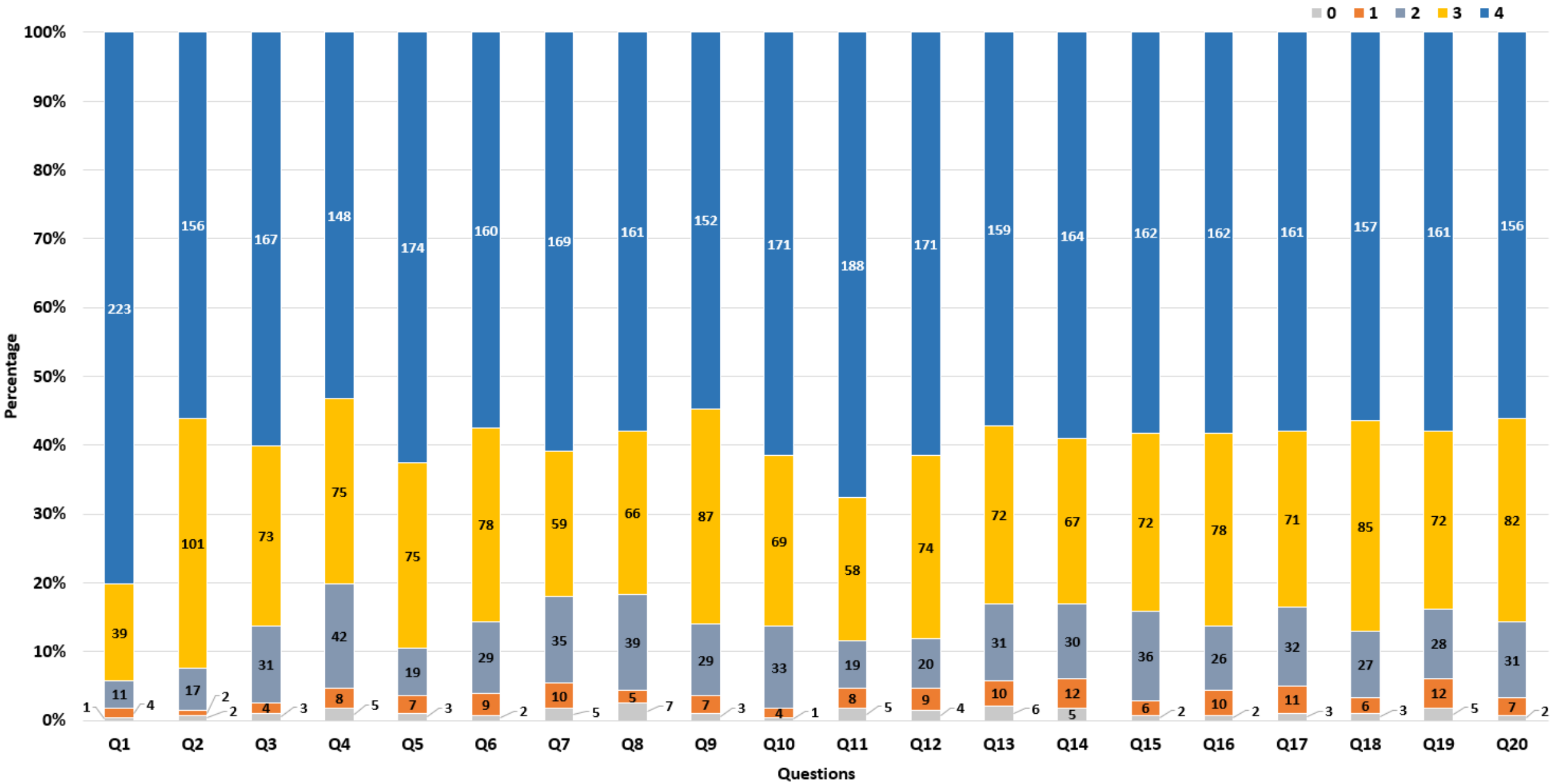
# School of Computing



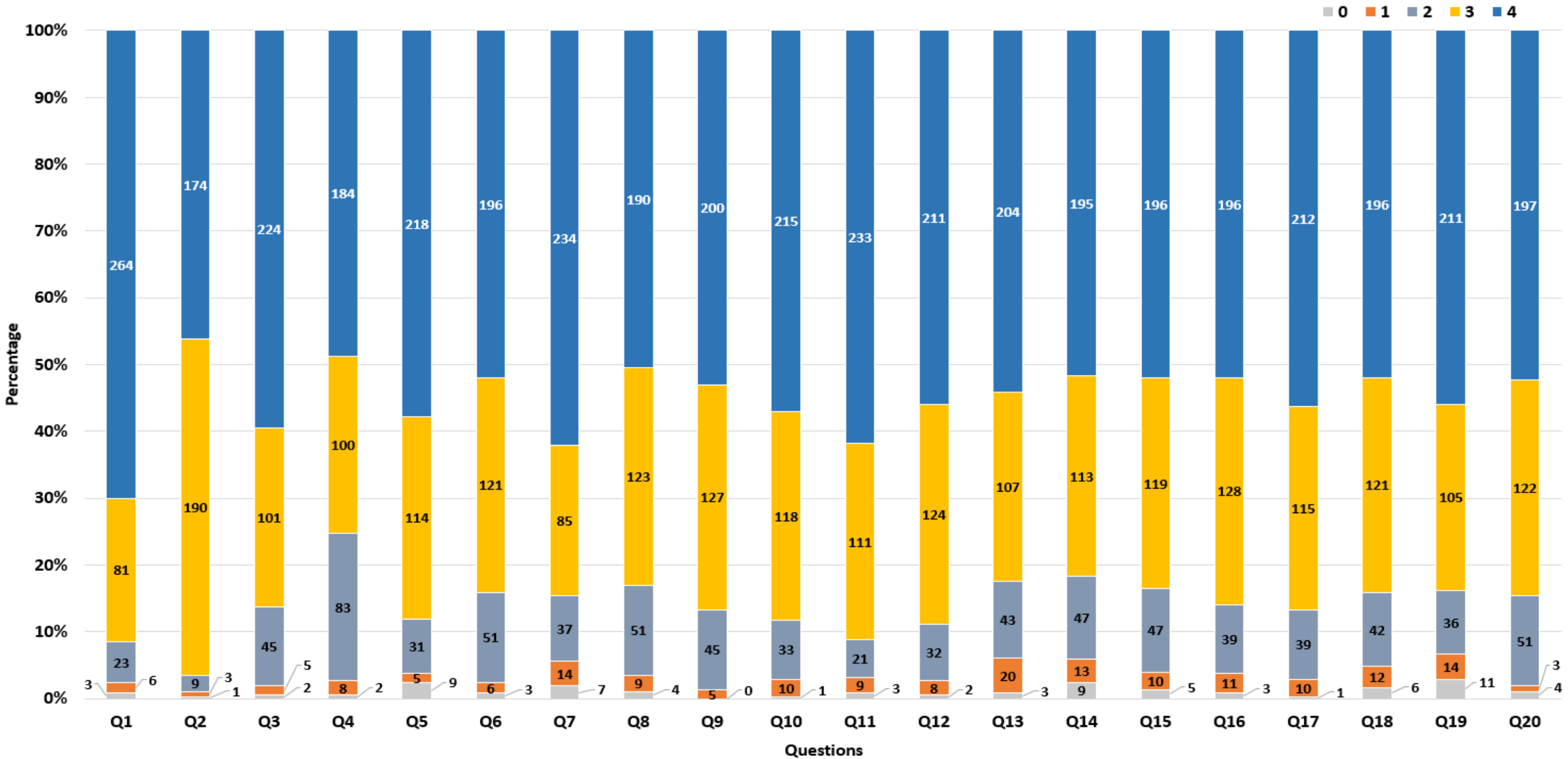
# School of Electrical & Communication



# School of Mechanical & Construction

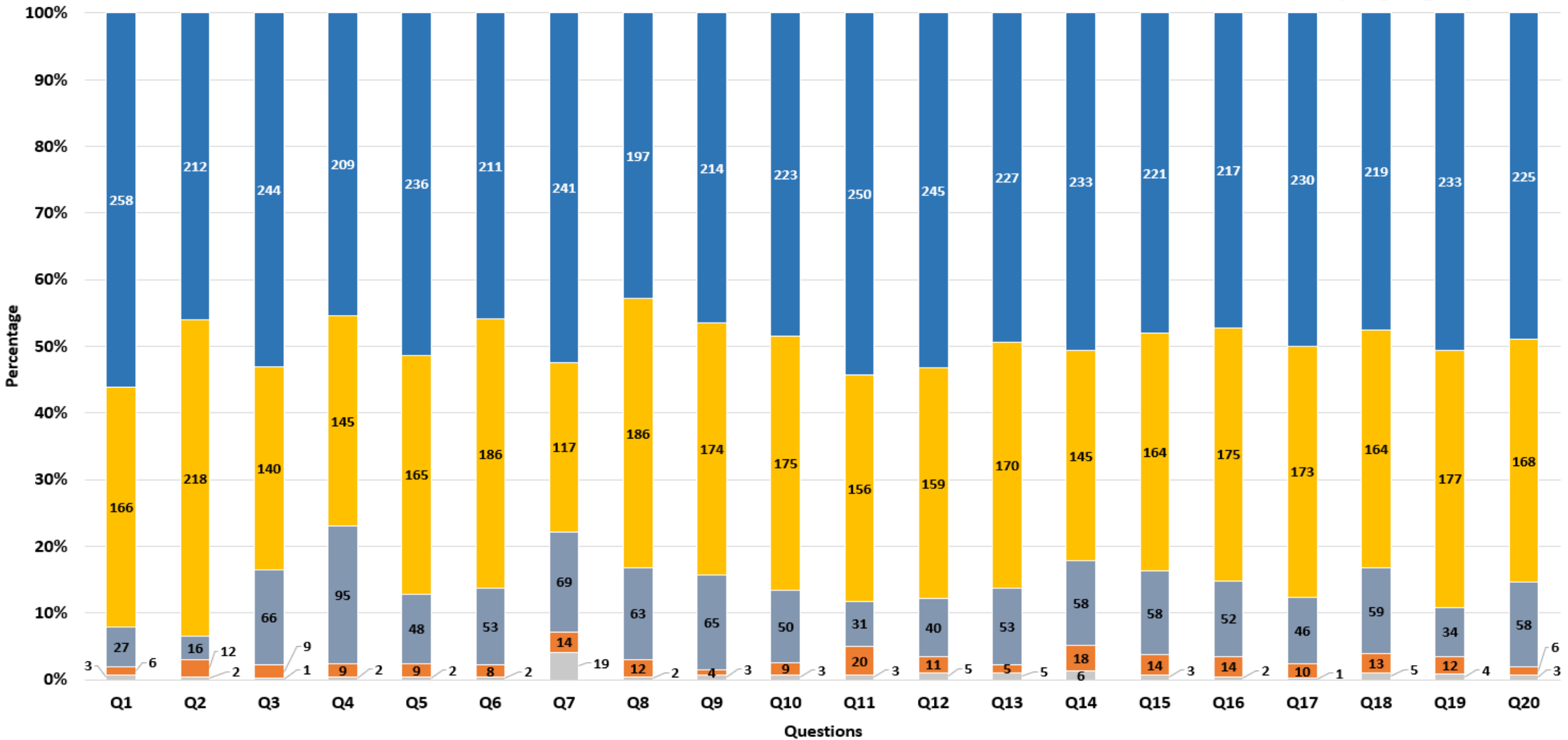


# School of Management



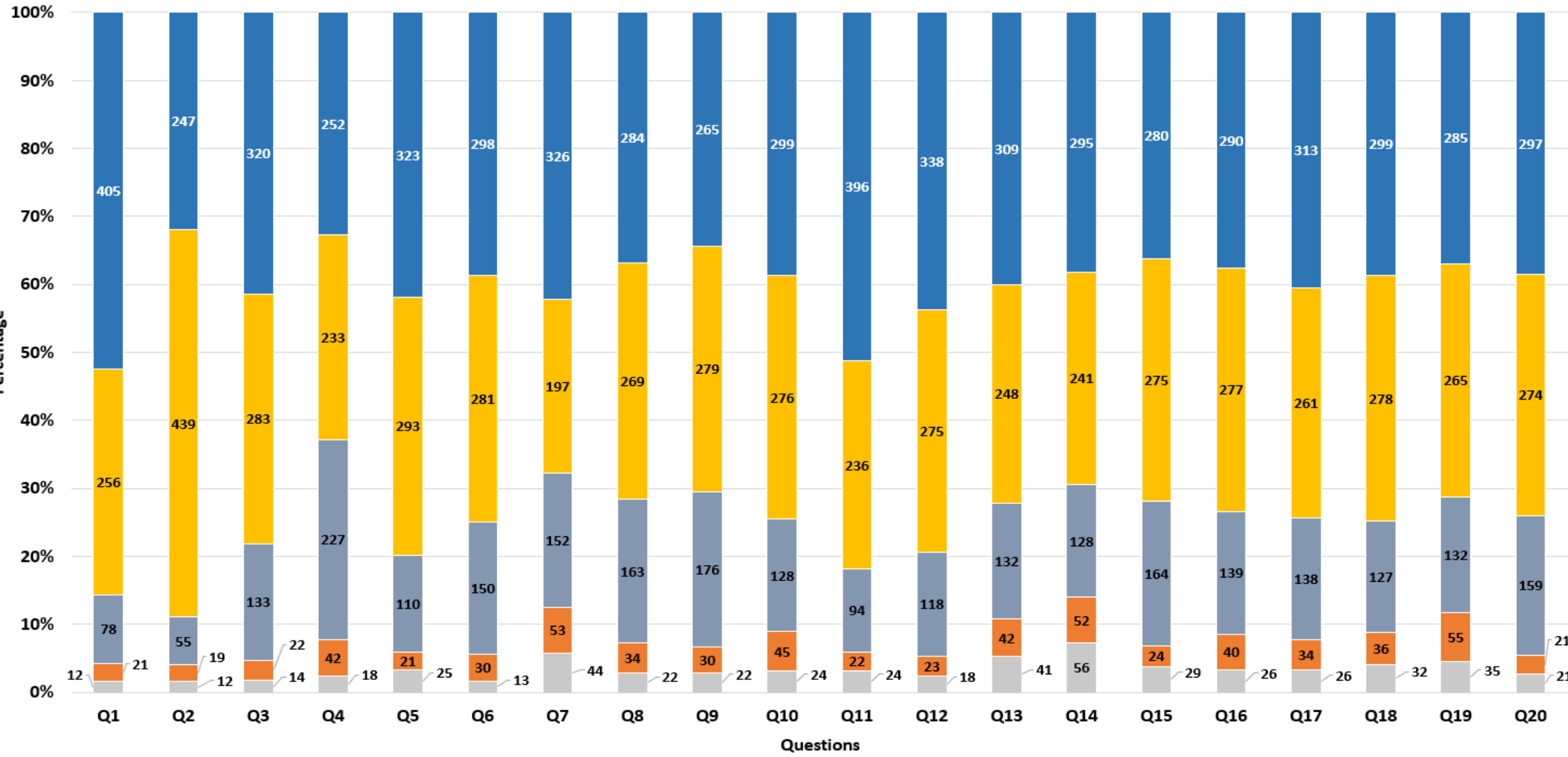
# School of Commerce

0 1 2 3 4



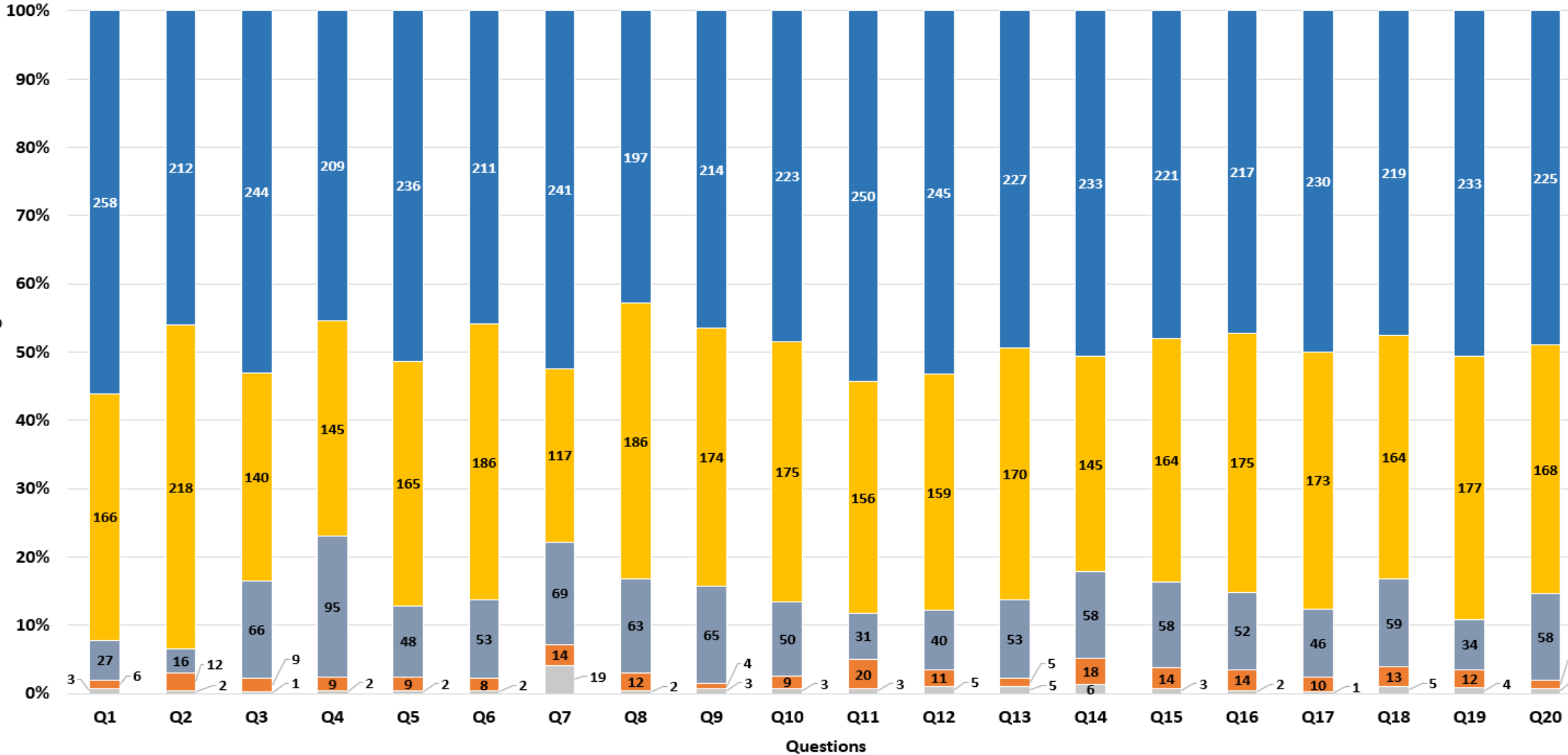
# School of Law

■ 0 
 ■ 1 
 ■ 2 
 ■ 3 
 ■ 4



# School of Media Technology & Communication

0 1 2 3 4



# **Inference from Student Response (Q21)**

The following observation / suggestions has been inferred from Q21 to improve the overall teaching – learning experience in the institution.

## **1. Teaching Quality and Pedagogical Methods**

- Emphasize real-world examples and applications.
- Reduce overdependence on PowerPoint presentations.
- Increase the use of blackboards, smartboards, and visual aids.
- Encourage interactive methods such as discussions, quizzes, and seminars.
- Maintain clarity and an appropriate pace in lectures.
- Adopt hybrid learning and AI-based tools to enhance engagement.
- Use AV tools, recorded lectures, and digital learning platforms.
- Support academically weak students with remedial classes.

## **2. Faculty Behavior and Development**

- Ensure respectful and empathetic interaction with students.
- Encourage faculty preparedness, and professionalism.
- Regularly conduct Faculty Development Programs (FDPs) focusing on pedagogy and communication.

## **3. Infrastructure and Facilities**

- Upgrade classrooms with ACs, smartboards, and projectors.
- Provide clean restrooms, filtered drinking water, and hygienic canteens.

- Modernize laboratories with functioning equipment and updated software.
- Improve hostel amenities, mess food quality, and bus transportation.

#### **4. Curriculum and Academic Enrichment**

- Revise outdated syllabi; include emerging technologies like AI, Cloud Computing, etc.
- Reduce excessive theoretical content in favor of practical learning.
- Provide coding classes, real-world problem-solving sessions, and project-based learning.

#### **5. Assessment and Evaluation**

- Ensure fair and unbiased evaluation systems.
- Prioritize concept-based and skill-oriented assessments over rote learning.

#### **6. Internship, Industry Exposure, and Career Readiness**

- Start internships and industry engagement from early semesters.
- Organize industrial visits, expert lectures, coding marathons, and workshops.
- Offer placement training, mock interviews, and resume preparation sessions.
- Collaborate with industries and certification bodies.

#### **7. Academic Planning and Student Support**

- Avoid exam clustering, Communicate academic calendars and exam schedules in advance.

- Appoint student representatives to voice concerns effectively.
- Address grievances swiftly and respectfully.
- Promote student mentorship and emotional counseling.

## **8. Student Engagement and Co-Curricular Activities**

- Conduct more cultural, technical, and sports events.
- Establish student clubs, conduct competitions, and promote interdepartmental activities.
- Include personality development programs, mental wellness sessions, and language support classes.

# **Student Satisfaction Survey (SSS) on Teaching – Learning and Evaluation Questionnaire**

Q1. How much of the syllabus was covered in the class?

- 4 – 85 to 100%
- 3 – 70 to 84%
- 2 – 55 to 69%
- 1– 30 to 54%
- 0 –Below 30%

Q2. How well did the teachers prepare for the classes?

- 4 –Thoroughly
- 3 – Satisfactorily
- 2 – Poorly
- 1 – Indifferently
- 0 – Won't teach at all

Q3. How well were the teachers able to communicate?

- 4 – Always effective
- 3 – Sometimes effective
- 2 – Just satisfactorily
- 1– Generally ineffective
- 0– Very poor communication

Q4. The teacher's approach to teaching can best be described as

- 4– Excellent
- 3 – Very good
- 2 – Good
- 1 – Fair
- 0– Poor

Q5. Fairness of the internal evaluation process by the teachers.

- 4 – Always fair
- 3 – Usually fair
- 2 – Sometimes unfair
- 1 – Usually unfair
- 0 – Unfair

Q6. Was your performance in assignments discussed with you?

- 4 – Every time
- 3 – Usually

- 2 – Occasionally/Sometimes
- 1 – Rarely
- 0– Never

Q7. The institute takes active interest in promoting internship, student exchange, field visit opportunities for students.

- 4 – Regularly
- 3 – Often
- 2 – Sometimes
- 1 – Rarely
- 0 – Never

Q8. The teaching and mentoring process in your institution facilitates you in cognitive, social and emotional growth.

- 4 – Significantly
- 3 – Very well
- 2 – Moderately
- 1 – Marginally
- 0 – Not at all

Q9. The institution provides multiple opportunities to learn and grow.

- 4 – Strongly agree
- 3 – Agree
- 2 – Neutral
- 1 – Disagree
- 0 – Strongly disagree

Q10. Teachers inform you about your expected competencies, course outcomes and programme outcomes.

- 4 – Every time
- 3 – Usually
- 2– Occasionally/Sometimes
- 1 – Rarely
- 0 – Never

Q11. Your mentor does a necessary follow-up with an assigned task to you.

- 4 – Every time
- 3 – Usually
- 2 – Occasionally/Sometimes
- 1 – Rarely
- 0 – I don't have a mentor

Q12. The teachers illustrate the concepts through examples and applications.

- 4 – Every time
- 3 – Usually
- 2 – Occasionally/Sometimes
- 1 – Rarely
- 0 – Never

Q13. The teachers identify your strengths and encourage you with providing right level of challenges.

- 4 – Fully
- 3 – Reasonably
- 2 – Partially
- 1 – Slightly
- 0 – Unable to

Q14. Teachers are able to identify your weaknesses and help you to overcome them.

- 4 – Every time
- 3 – Usually
- 2 – Occasionally/Sometimes
- 1 – Rarely
- 0 – Never

Q15. The institution makes effort to engage students in the monitoring, review and continuous quality improvement of the teaching learning process.

- 4 – Strongly agree
- 3 – Agree
- 2 – Neutral
- 1 – Disagree
- 0 – Strongly disagree

Q16. The institute/ teachers use student centric methods, such as experiential learning, participative learning and problem solving methodologies for enhancing learning experiences.

- 4 – To a great extent
- 3 – Moderate
- 2 – Some what
- 1 – Very little
- 0 – Not at all

Q17. Teachers encourage you to participate in extracurricular activities.

- 4 – Strongly agree
- 3 – Agree
- 2 – Neutral
- 1 – Disagree
- 0 – Strongly disagree

Q18. Efforts are made by the institute/ teachers to inculcate soft skills, life skills and employability skills to make you ready for the world of work.

- 4 – To a great extent
- 3 – Moderate
- 2 – Some what
- 1 – Very little
- 0 – Not at all

Q19. What percentage of teachers use ICT tools such as LCD projector, Multimedia, etc. while teaching.

- 4 – Above 90%
- 3 – 70 – 89%
- 2 – 50 – 69%
- 1 – 30 – 49%
- 0 – Below 29%

Q20. The overall quality of teaching-learning process in your institute is very good.

- 4 –Strongly agree
- 3 – Agree
- 2 – Neutral
- 1 – Disagree
- 0 – Strongly disagree

Q21. Give three observation / suggestions to improve the overall teaching – learning experience in your institution.

- a)
- b)
- c)