



Office of Quality Assurance

Student Satisfaction Survey (SSS) on Teaching – Learning and Evaluation

Student Response - Analysis

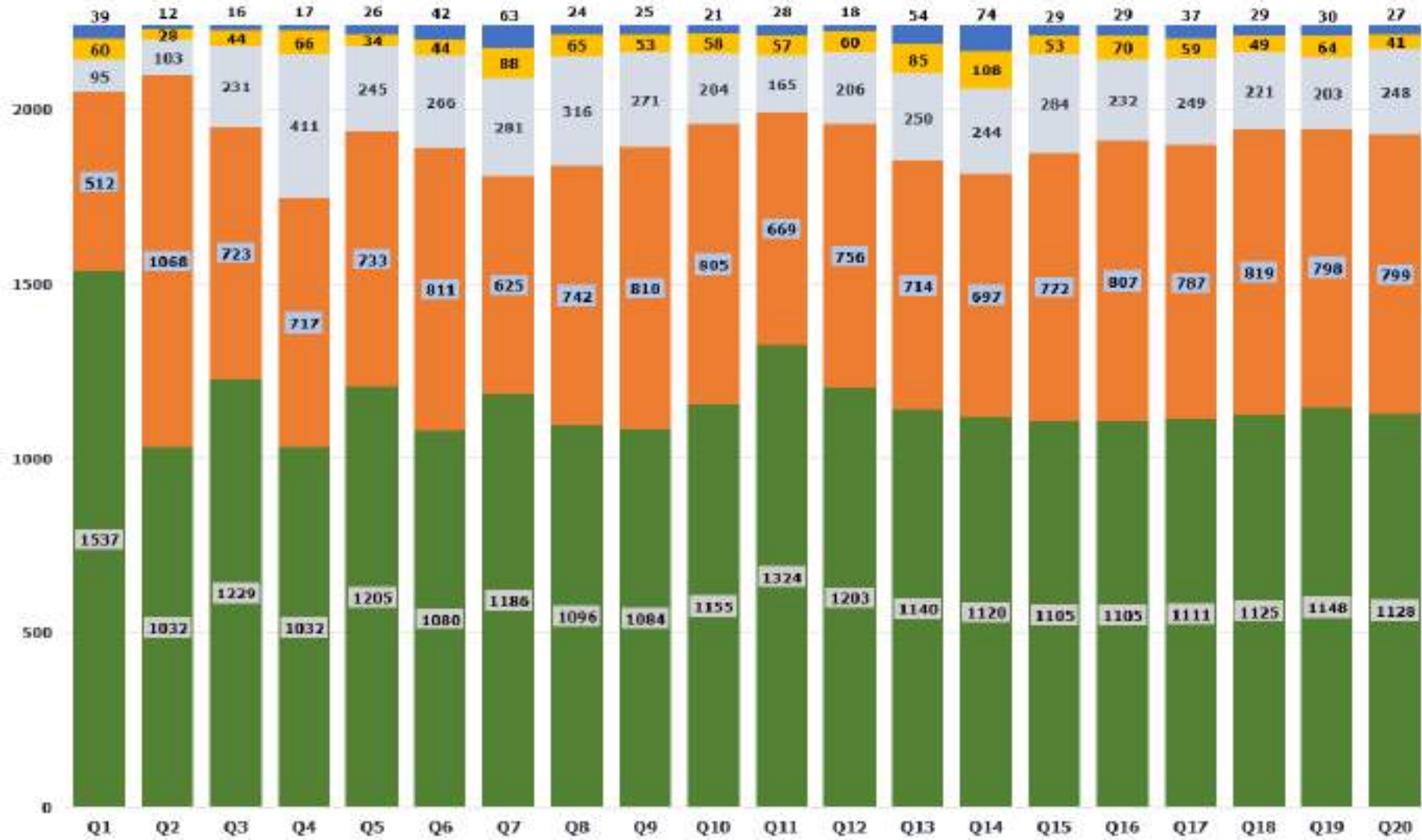
AY 2023-24

Total Responded Count - 5163

School	Department	Count
School of Computing	Artificial Intelligence and Machine Learning	154
	Artificial Intelligence(AI) and Data Science	69
	Computer Science and Design	63
	Computer Science and Engineering (Artificial Intelligence and Machine Learning)	67
	Computer Science and Engineering (Cyber Security)	47
	Computer Science and Engineering (Data Science)	38
	Computer Science Engineering	1585
	Information Technology	220
School of Electrical and Communication	Biomedical Engineering	130
	Biotechnology	77
	Electronics and Communication Engineering	1131
	Electrical and Electronics Engineering	54
School of Mechanical and Construction	Aeronautical Engineering	83
	Civil Engineering	6
	Mechanical Engineering	110
School of Management	B.B.A.	37
	B.Com.	267
	M.B.A.	176
School of Law	B.A LL.B. (Hons.)	370
	B.Com LL.B. (Hons.)	339
School of Multimedia Technology and Communication	Multimedia	16
	Visual Communication	46
School of Sciences and Humanities	Chemistry	50
	Mathematics	17
	Physics	11
Grand Total		5163

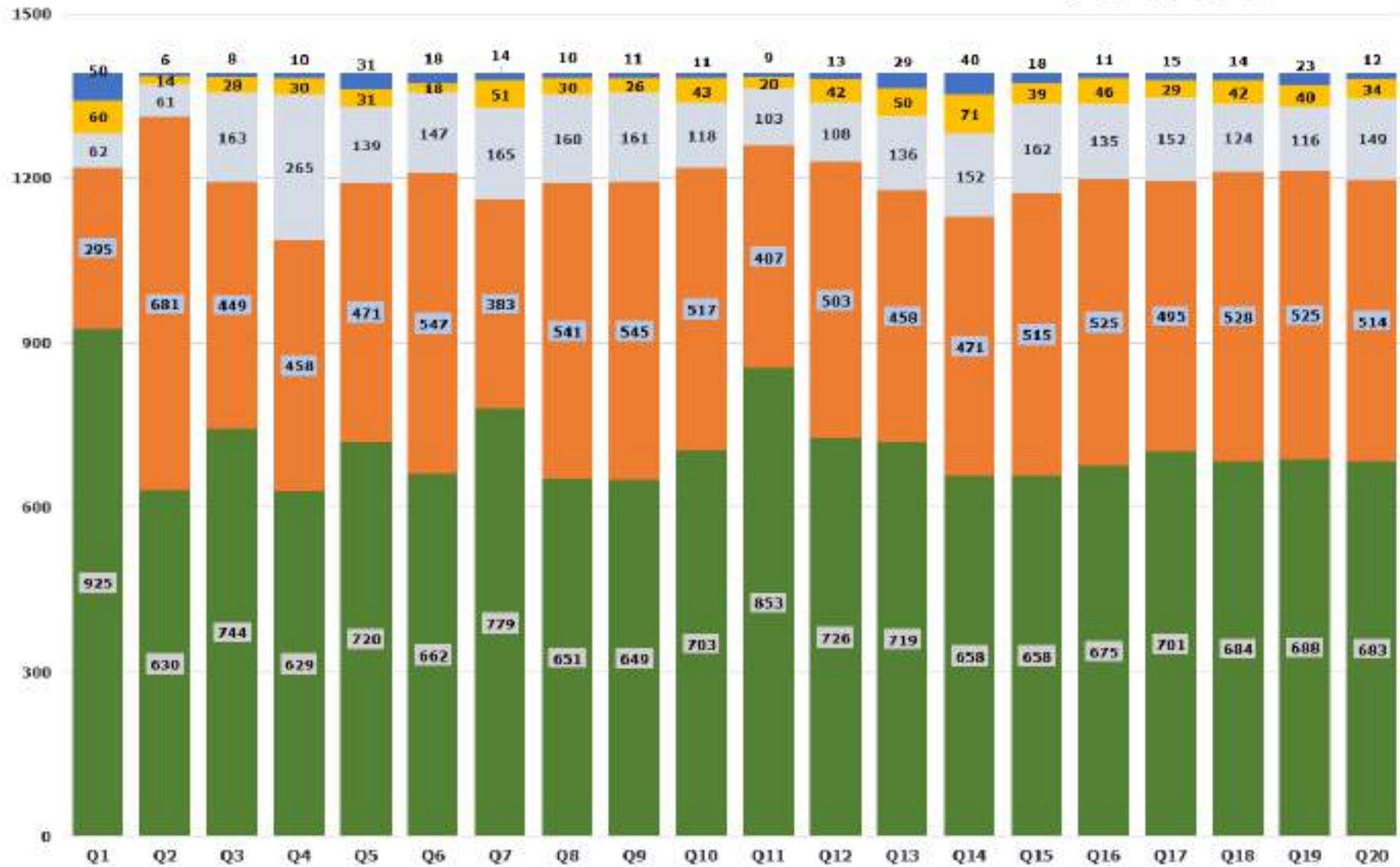
School of Computing

4 3 2 1 0



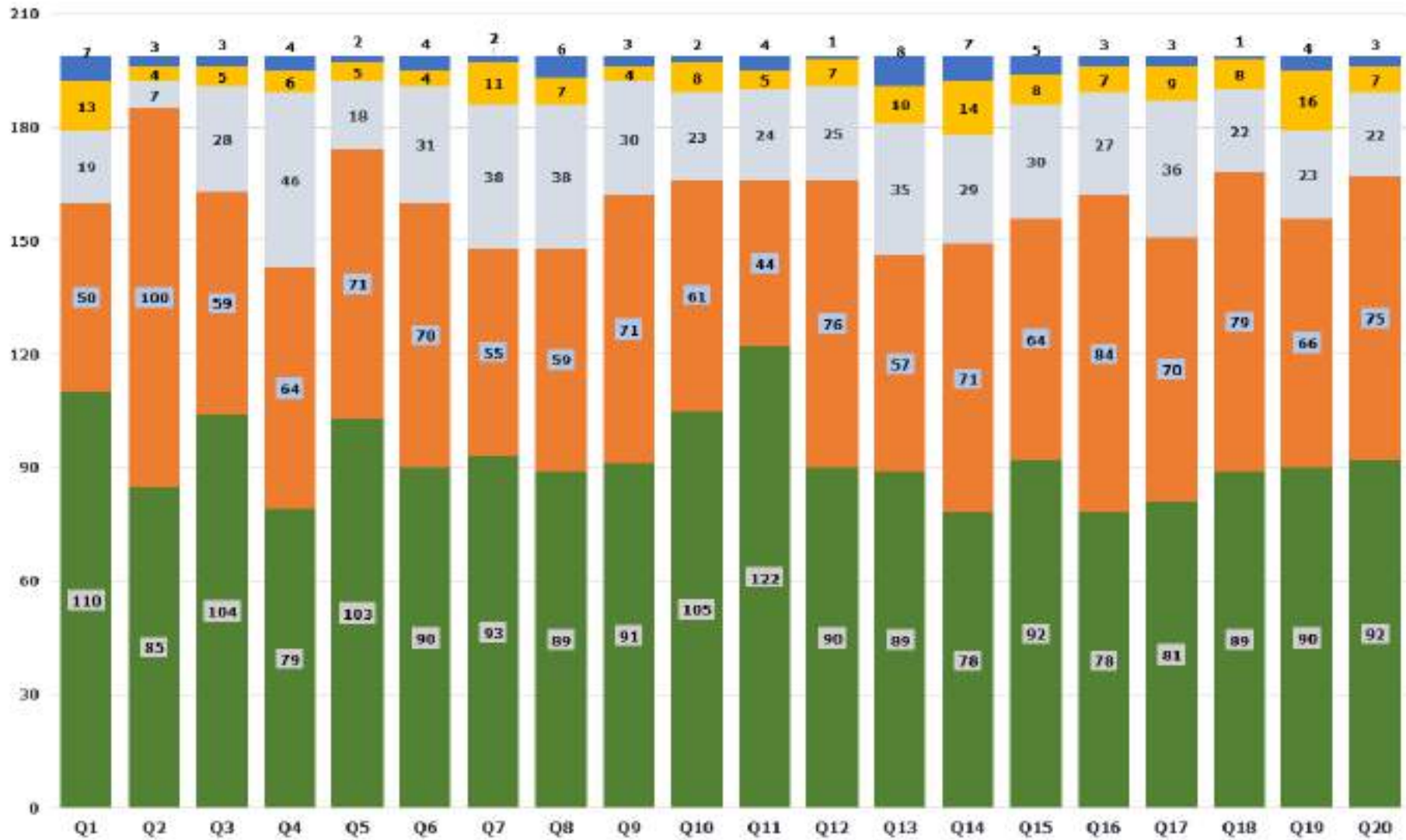
School of Electrical & Communication

■ 4 ■ 3 ■ 2 ■ 1 ■ 0

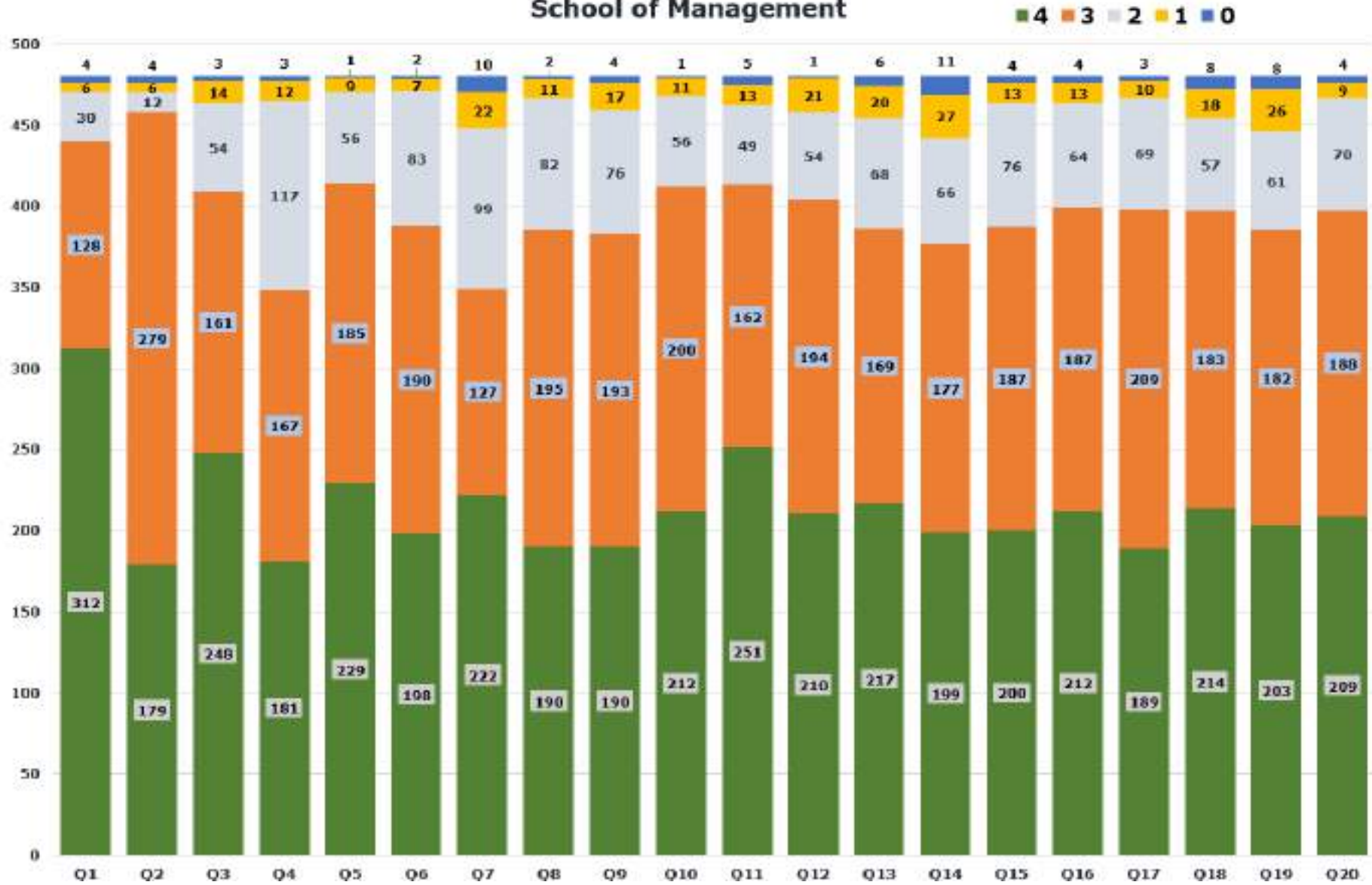


School of Mechanical & Construction

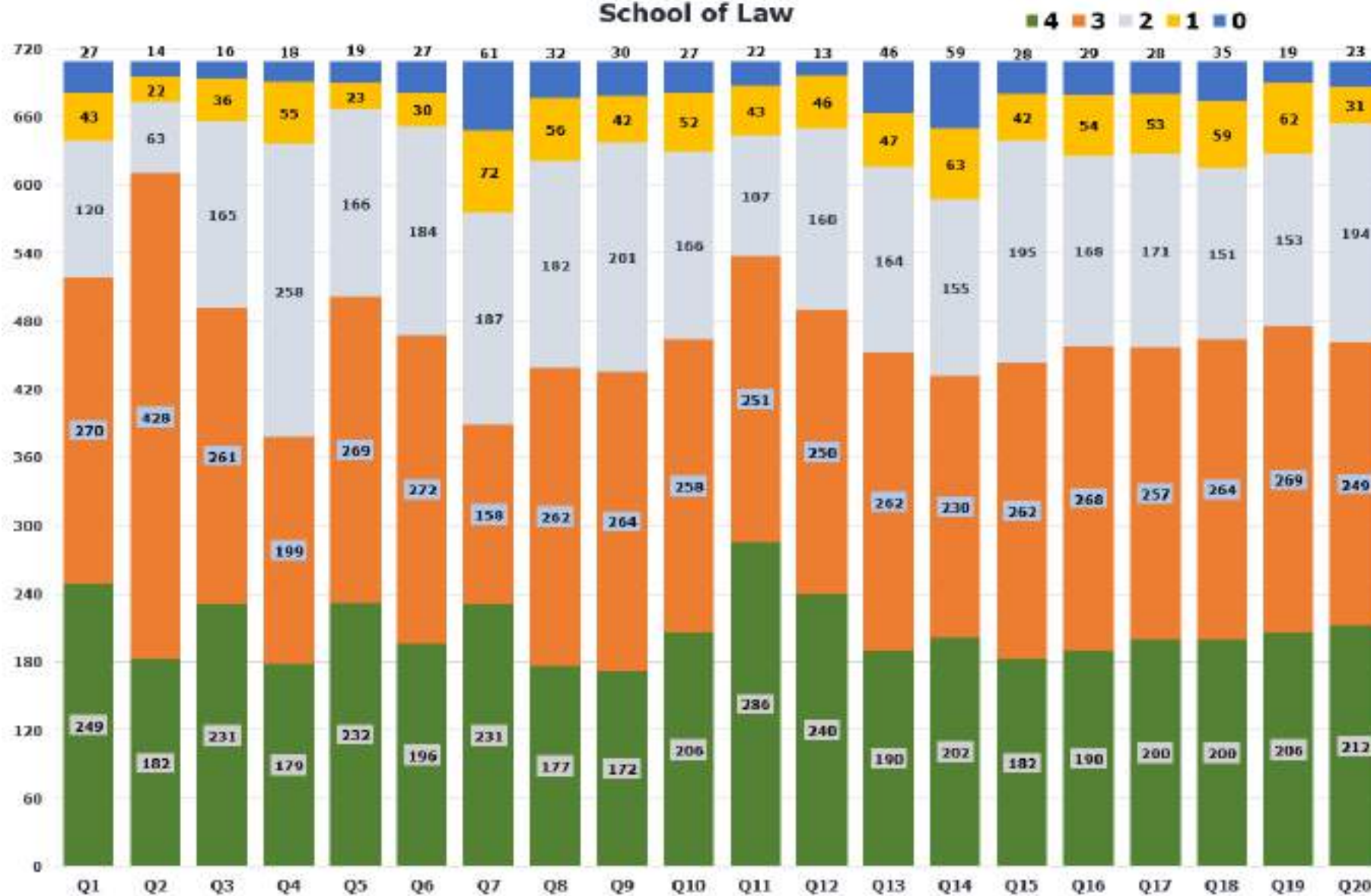
■ 4 ■ 3 ■ 2 ■ 1 ■ 0



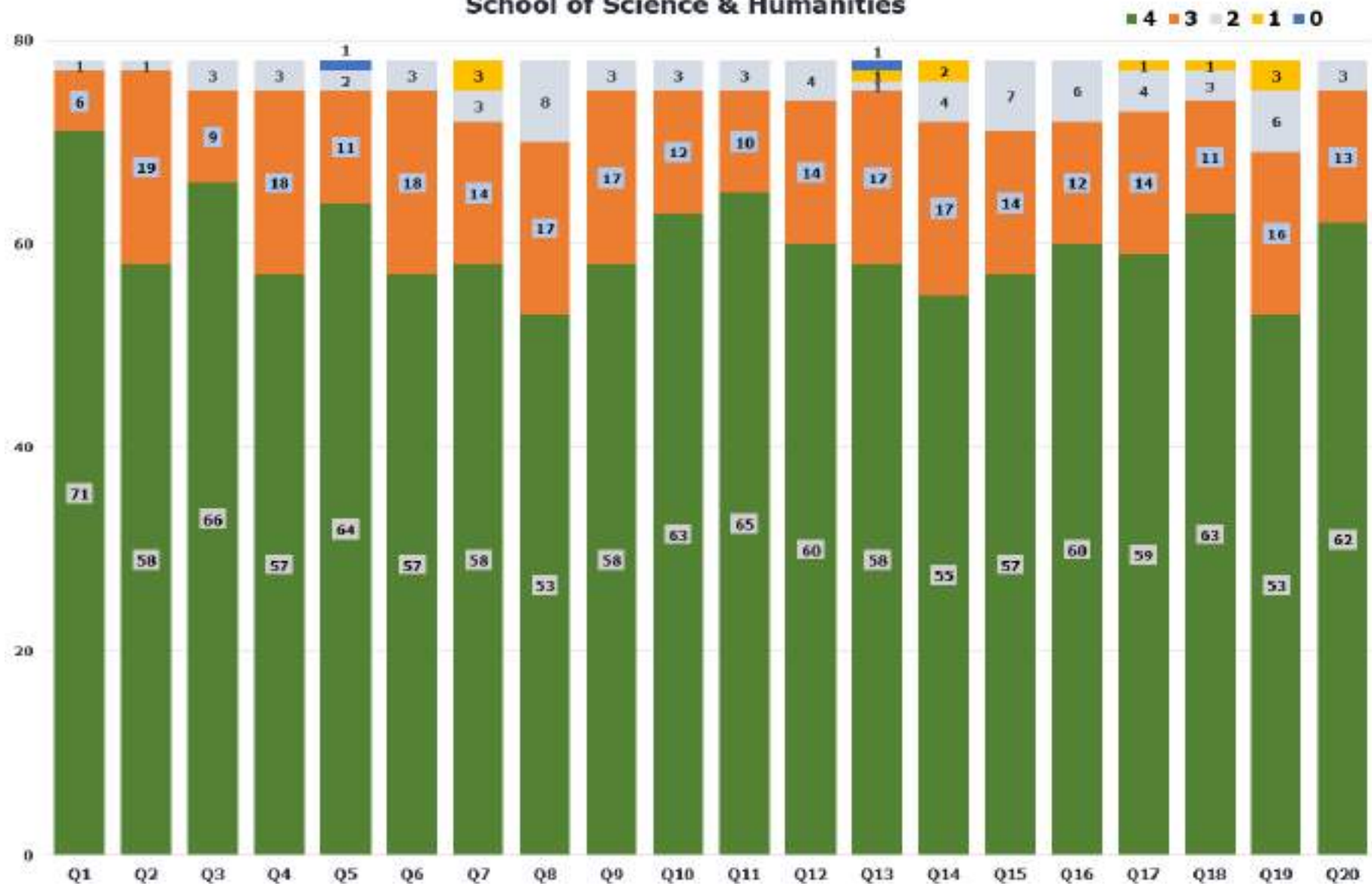
School of Management



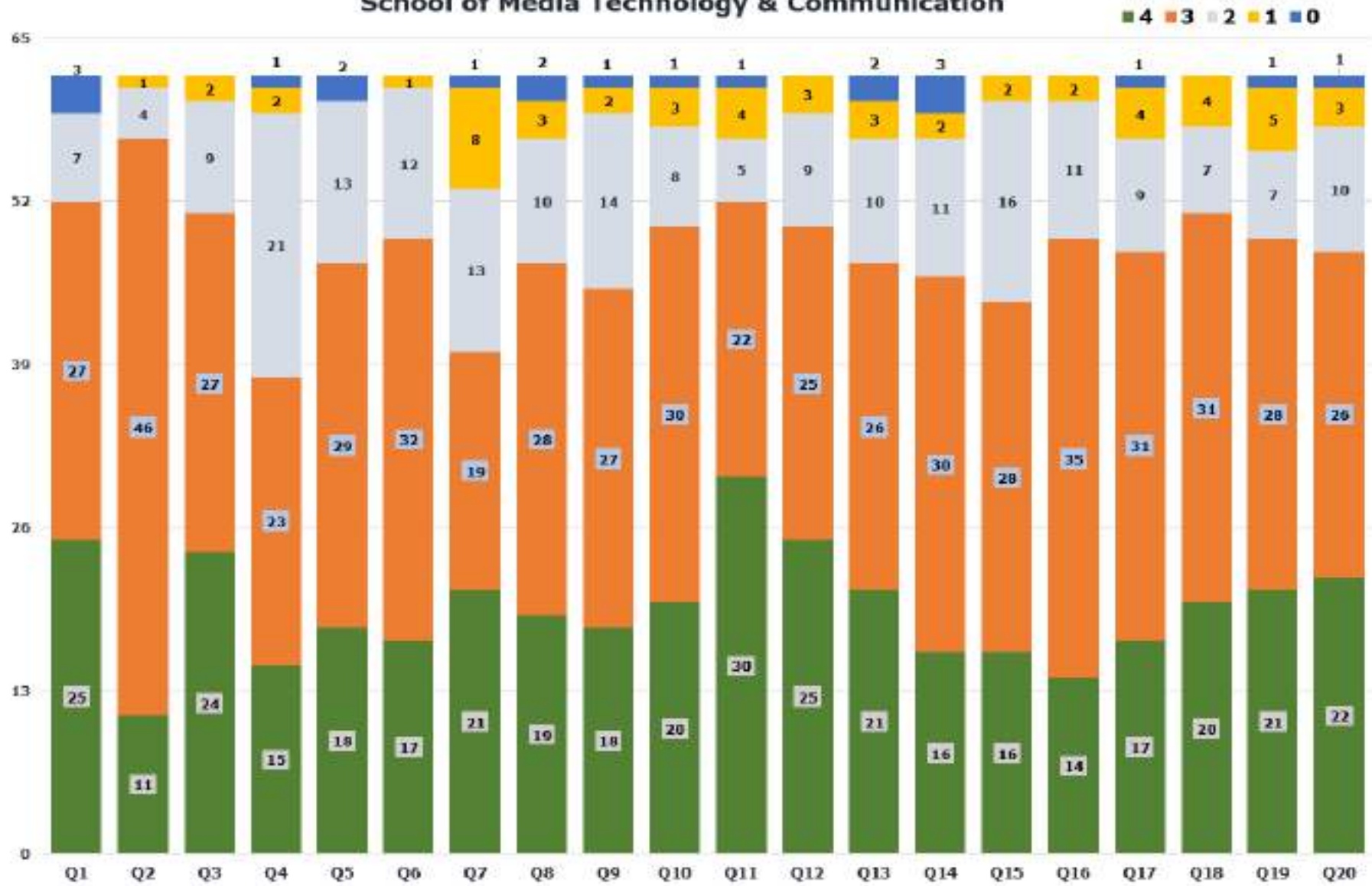
School of Law



School of Science & Humanities



School of Media Technology & Communication



Inference from Student Response (Q21)

The following observation / suggestions has been inferred from Q21 to improve the overall teaching – learning experience of the institution.

1. Classroom Environment and Infrastructure: To improve the overall classroom environment, including repairing broken benches, and upgrading equipment like projectors and digital boards. To ensure adequate maintenance of infrastructure and better internet connectivity.

2. Teaching and Learning Enhancements: To focus on practical applications and real-world examples in teaching. Incorporate interactive methods, use ICT tools effectively, and ensure teachers provide clear explanations and cover the entire syllabus on time. To use digital tools and educational apps to enrich learning experiences.

3. Student Engagement and Extracurricular Activities: To encourage student participation in extracurricular activities, including sports, moot courts, and industry-related events. To facilitate official duty leave for such activities and conduct regular quizzes, seminars, and field trips to enhance practical learning.

4. Practical Experience and Industry Exposure: To increase opportunities for hands-on learning and internships. Incorporate more industry-standard experiments and real-time assignments into the curriculum. To foster industry partnerships and offer vocational training to improve career readiness.

5. Faculty Development and Support: To provide ongoing training for faculty on new teaching methods, technologies, and industry trends. To ensure experienced teachers support their colleagues and adapt teaching strategies to meet students' needs. To encourage faculty to engage with students and offer personalized learning plans.

6. Student Support and Communication: To improve communication between faculty and students. To address assignment and feedback issues, and ensure that all students receive the support they need, including international students. To foster a respectful and inclusive learning environment.

7. Career Services and Research Opportunities: To strengthen career services and provide better support for job placements and research opportunities. Develop partnerships with organizations for internships and real-world projects.

8. General Improvements: To ensure fair semester evaluations, avoid discrimination, and maintain a supportive learning environment. To regularly update educational resources, improve hostel conditions, and offer better facilities for students' overall well-being.

Student Satisfaction Survey (SSS) on Teaching – Learning and Evaluation Questionnaire

- Q1. How much of the syllabus was covered in the class?
- 4 – 85 to 100%
 - 3 – 70 to 84%
 - 2 – 55 to 69%
 - 1– 30 to 54%
 - 0 –Below 30%
- Q2. How well did the teachers prepare for the classes?
- 4 –Thoroughly
 - 3 – Satisfactorily
 - 2 – Poorly
 - 1 – Indifferently
 - 0 – Won't teach at all
- Q3. How well were the teachers able to communicate?
- 4 – Always effective
 - 3 – Sometimes effective
 - 2 – Just satisfactorily
 - 1– Generally ineffective
 - 0– Very poor communication
- Q4. The teacher's approach to teaching can best be described as
- 4– Excellent
 - 3 – Very good
 - 2 – Good
 - 1 – Fair
 - 0– Poor
- Q5. Fairness of the internal evaluation process by the teachers.
- 4 – Always fair
 - 3 – Usually fair
 - 2 – Sometimes unfair
 - 1 – Usually unfair
 - 0 – Unfair
- Q6. Was your performance in assignments discussed with you?
- 4 – Every time

- 3 – Usually
- 2 – Occasionally/Sometimes
- 1 – Rarely
- 0 – Never

Q7. The institute takes active interest in promoting internship, student exchange, field visit opportunities for students.

- 4 – Regularly
- 3 – Often
- 2 – Sometimes
- 1 – Rarely
- 0 – Never

Q8. The teaching and mentoring process in your institution facilitates you in cognitive, social and emotional growth.

- 4 – Significantly
- 3 – Very well
- 2 – Moderately
- 1 – Marginally
- 0 – Not at all

Q9. The institution provides multiple opportunities to learn and grow.

- 4 – Strongly agree
- 3 – Agree
- 2 – Neutral
- 1 – Disagree
- 0 – Strongly disagree

Q10. Teachers inform you about your expected competencies, course outcomes and programme outcomes.

- 4 – Every time
- 3 – Usually
- 2 – Occasionally/Sometimes
- 1 – Rarely
- 0 – Never

Q11. Your mentor does a necessary follow-up with an assigned task to you.

- 4 – Every time
- 3 – Usually
- 2 – Occasionally/Sometimes
- 1 – Rarely
- 0 – I don't have a mentor

Q12. The teachers illustrate the concepts through examples and applications.

- 4 – Every time
- 3 – Usually
- 2 – Occasionally/Sometimes
- 1 – Rarely
- 0 – Never

Q13. The teachers identify your strengths and encourage you with providing right level of challenges.

- 4 – Fully
- 3 – Reasonably
- 2 – Partially
- 1 – Slightly
- 0 – Unable to

Q14. Teachers are able to identify your weaknesses and help you to overcome them.

- 4 – Every time
- 3 – Usually
- 2 – Occasionally/Sometimes
- 1 – Rarely
- 0 – Never

Q15. The institution makes effort to engage students in the monitoring, review and continuous quality improvement of the teaching learning process.

- 4 – Strongly agree
- 3 – Agree
- 2 – Neutral
- 1 – Disagree
- 0 – Strongly disagree

Q16. The institute/ teachers use student centric methods, such as experiential learning, participative learning and problem solving methodologies for enhancing learning experiences.

- 4 – To a great extent
- 3 – Moderate
- 2 – Some what
- 1 – Very little
- 0 – Not at all

Q17. Teachers encourage you to participate in extracurricular activities.

- 4 – Strongly agree
- 3 – Agree
- 2 – Neutral
- 1 – Disagree
- 0 – Strongly disagree

Q18. Efforts are made by the institute/ teachers to inculcate soft skills, life skills and employability skills to make you ready for the world of work.

- 4 – To a great extent
- 3 – Moderate
- 2 – Some what
- 1 – Very little
- 0 – Not at all

Q19. What percentage of teachers use ICT tools such as LCD projector, Multimedia, etc. while teaching.

- 4 – Above 90%
- 3 – 70 – 89%
- 2 – 50 – 69%
- 1 – 30 – 49%
- 0 – Below 29%

Q20. The overall quality of teaching-learning process in your institute is very good.

- 4 –Strongly agree
- 3 – Agree
- 2 – Neutral
- 1 – Disagree
- 0 – Strongly disagree

Q21. Give three observation / suggestions to improve the overall teaching – learning experience in your institution.

- a)
- b)
- c)